

# TRUCK CRANE QY25D<sub>531R</sub>



**ZOOMLION**

Zoomlion Heavy Industry Science & Technology Co.,Ltd.

Add:Zoomlion Overseas Building, No.613, 3rd Section, Furong Middle Road, Yuhua District, Changsha, Hunan, P.R.China 410205

Copyright © 2015 Zoomlion. All rights reserved. Reproduction and copying of any part of the Contents is not allowed for any purposes without Zoomlion's written approval.  
Note: No product coating appearance shall be subject to sample.



Printed in China. VN-EN-MC-201509-01

**ZOOMLION**

[en.zoomlion.com](http://en.zoomlion.com)

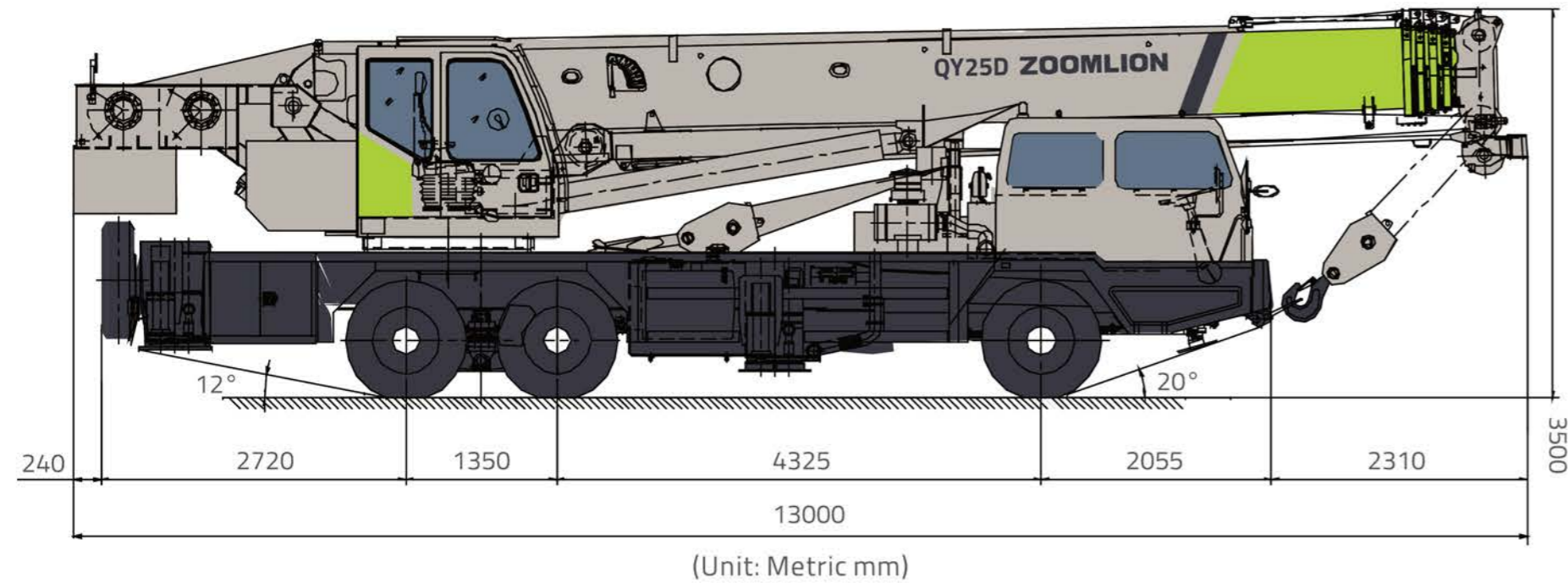
## Features

### Lifting capacity

Integrates Zoomlion more than 40 years experience in mobile cranes with advanced technology

1. Jib length 8.0m, Main boom length(10.6 – 40.0m)
2. Optimized central slewing position increases the lifting capacity of the crane over rear
3. Large outrigger span improves the working stability of the crane greatly
4. Adopt internationally advanced structure analysis and calculation methods to develop the lifting capacity of crane deeply
5. Leading boom manufacturing process.

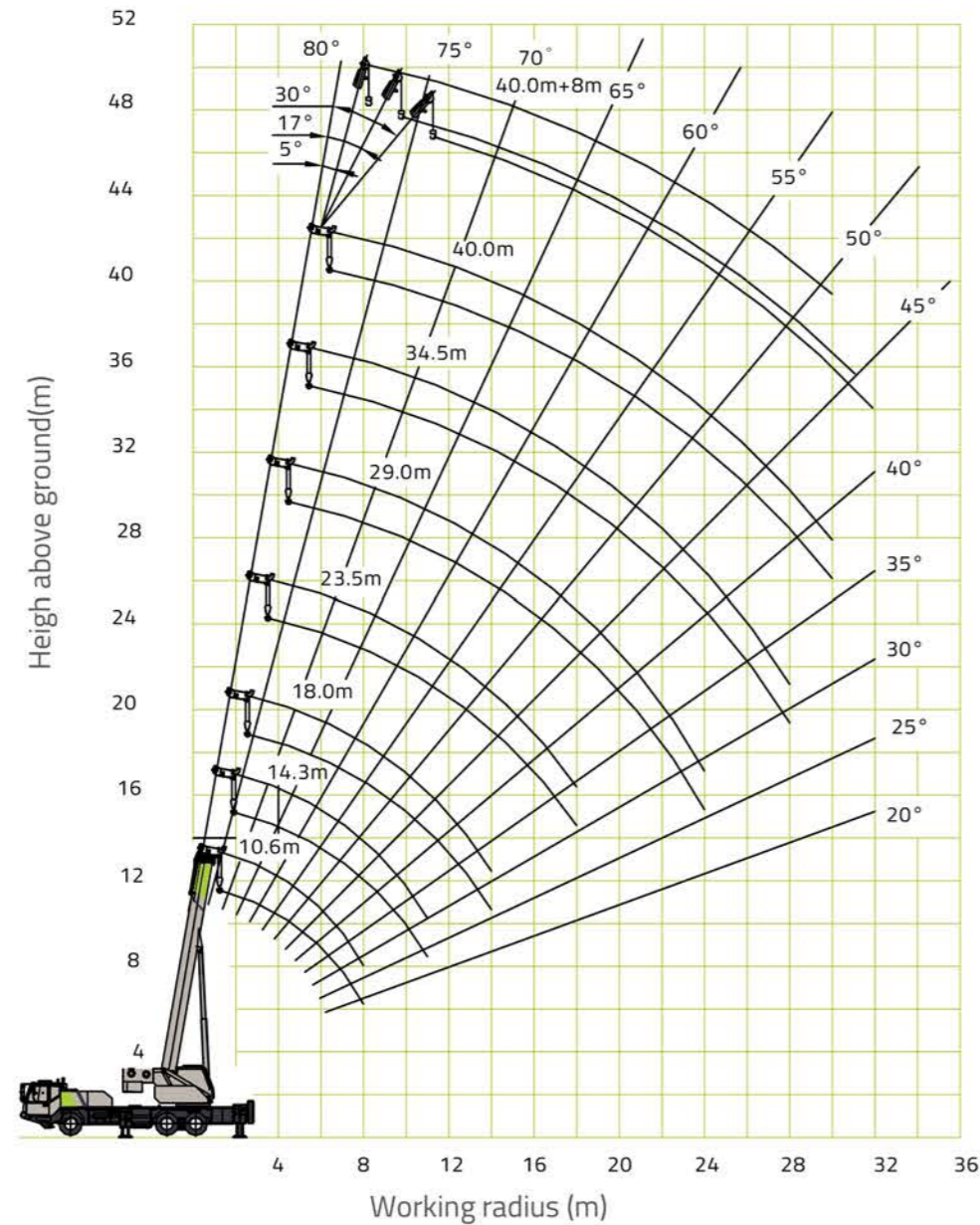
## Overall View



## Technical Data

	Item	Unit	Value	Remarks
Working performance	Max. rated lifting capacity	kg	25000	
	Max. load moment of basic boom	kN.m	1029	
	Max. load moment of main boom(fully extended)	kN.m	564	
	Max. load moment of basic boom	m	11.1	
	Max. lifting height of main boom	m	40.5	These parameters do not include deflection of main boom and jib
	Max. lifting height of jib	m	48.5	
Working speeds	Max. hoist rope speed(Main winch)	m/min	120	At the 4 <sup>th</sup> layer
	Max. hoist rope speed(Auxiliary winch)	m/min	100	At the 2 <sup>nd</sup> layer
	Boom demrriking up time	s	40	
	Boom extending time	s	80	
	Slewing speed	r/min	0~2.2	
Driving	Max. driving speed	km/h	78	
	Max. gradeability	%	37	
	Turning diameter	m	≤22	
	Min. ground clearance	mm	235	
	Oil consumption per hundred kilometers	L	35	
Mass	Deadweight in driving condition	kg	32400	
	Complete vehicle kerb mass	kg	32270	
	Front axle load	kg	6500	
	Rear axle load	kg	25900	
Dimensions	Overall dimensions(L×W×H)	mm	13000×2550×3500	
	Outrigger spread(L)	m	5.36	
	Outrigger spread(W)	m	Fully extended:6.1,intermediately extended:4.2	
	Tail slewing radius	mm	3385	
	Main boom length	m	10.6~40.0	
	Boom angle	°	-2~80	
	jib length	m	8.0	
	Offset	°	5、 17、 30	

# Lifting Height Chart



# Rated Lifting Capacity Table

Table 1

Unit: Metric kg

Working radius (m)	Main boom(m)						
	Telescoping cylinder I and outrigger completely extended, over sides and rear						
	10.6	14.3	18.0	23.5	29.0	34.5	40.0
3.0	25000	23000					
3.5	25000	23000	19500				
4.0	24500	22500	19000	14500			
4.5	22500	22000	18000	14500			
5.0	21000	19500	16500	14000			
5.5	18500	18000	15500	13000	10800		
6.0	16500	16300	14500	12000	10200		
6.5	14500	14500	13500	11500	9800		
7.0	13000	13000	12500	11000	9400	7800	
7.5	12000	12000	11500	9800	9000	7400	
8.0	11200	11200	11000	9500	8500	7000	
9.0		9100	9000	8500	7600	6600	6000
10.0		7500	7400	7600	7000	6200	5500
11.0		6200	6200	6800	6200	5600	5100
12.0			5200	5800	5600	5200	4800
13.0			4300	5000	5200	4700	4400
14.0			3600	4300	4600	4400	4000
15.0				3600	4000	4000	3800
16.0				3100	3500	3600	3400
18.0				2300	2700	2900	2900
20.0					2050	2300	2400
22.0					1500	1750	1900
24.0					1100	1300	1450
26.0						950	1050
28.0						700	800
30.0							620
I	0	3.7	7.4	7.4	7.4	7.4	7.4
II	0	0	0	5.5	11.0	16.5	22.0
Reevings	8	6	6	4	4	3	3
Hook	25 t						

Table 2

Unit: Metric kg

Working radius (m)	Main boom(m)					
	Telescoping cylinder I intermediately extended and outrigger fully extended, over sides and rear					
	10.6	14.3	19.8	25.3	30.8	36.3
3.0	25000	23000				
3.5	25000	23000				
4.0	24500	22500	14000			
4.5	22500	22000	14000			
5.0	21000	19500	14000	10600		
5.5	18500	18000	13000	10400		
6.0	16500	16300	12000	10000		
6.5	14500	14500	11500	9600	7600	
7.0	13000	13000	11000	9200	7600	
7.5	12000	12000	10000	8800	7200	
8.0	11200	11200	9800	8500	6800	6000
9.0		9100	8500	7600	6500	6000
10.0		7500	7600	6800	6200	5400
11.0		6200	6600	6200	5600	5000
12.0			5600	5600	5000	4800
13.0			4800	5200	4700	4300
14.0			4000	4400	4200	4000
15.0			3400	3850	3900	3800
16.0			2800	3200	3500	3300
18.0				2600	2900	2900
20.0				1800	2250	2250
22.0				1300	1800	1800
24.0					1200	1300
26.0					900	1000
28.0					650	750
30.0						
I	0	3.7	3.7	3.7	3.7	3.7
II	0	0	5.5	11.0	16.5	22.0
Reevings	8	6	4	4	3	3
Hook	25 t					

## Lifting Capacity Tables

Table 3 Unit:Metric kg

Working radius (m)	Main boom(m)				
	Telescoping cylinder I completely retracted and outriggers completely extended, over sides and rear				
	10.6	16.1	21.6	27.1	32.6
3.0	25000	14000			
3.5	25000	14000			
4.0	24500	14000	10400		
4.5	22500	14000	10400		
5.0	21000	14000	10400		
5.5	18500	13000	10400	7500	
6.0	16500	12000	10000	7500	
6.5	14500	11500	10000	7200	
7.0	13000	11000	10000	7000	
7.5	12000	9800	9800	6800	6000
8.0	11200	9500	9500	6600	5700
9.0		8200	8800	6300	5400
10.0		7400	8200	5800	5100
11.0		6500	7300	5100	4700
12.0		5500	6300	4500	4200
13.0		4700	5500	4200	3900
14.0		3800	4800	3950	3500
15.0			4200	3700	3200
16.0			3600	3500	3000
18.0			2800	2900	2600
20.0				2500	2200
22.0				1900	1700
24.0				1500	1300
26.0					1000
28.0					
30.0					
I	0	0	0	0	0
II	0	5.5	11.0	16.5	22.0
Reevings	8	6	4	3	3
Hook	25 t				

Table 4 Unit:Metric kg

Working radius (m)	Main boom(m)						
	Telescoping cylinder I completely extended and outriggers intermediately extended, over sides and rear						
	10.6	14.3	18.0	23.5	29.0	34.5	40.0
3.0	25000	23000					
3.5	22000	22000	19000				
4.0	20000	20000	19000	14000			
4.5	18000	18000	16500	14000			
5.0	15000	15000	15000	12000			
5.5	12500	12500	12300	11500	10200		
6.0	10000	10200	10300	10900	9500		
6.5	9000	8800	8700	9500	9000		
7.0	7800	7600	7500	8200	8000	7500	
7.5	6500	6500	6500	7100	7500	7000	
8.0	6000	4500	5500	6300	6300	6300	
9.0		3500	4300	4900	5300	5700	5500
10.0		2800	3300	3900	4300	4600	5000
11.0			2500	3100	3500	3800	4000
12.0			1800	2500	2900	3100	3400
13.0			1400	2000	2300	2600	2800
14.0			1000	1600	1900	2100	2400
15.0				1200	1500	1800	2000
16.0				900	1200	1500	1700
18.0					800	1000	1100
20.0						700	800
22.0							
I	0	3.7	7.4	7.4	7.4	7.4	7.4
II	0	0	0	5.5	11.0	16.5	22.0
Reevings	8	6	6	4	4	3	3
Hook	25 t						

## Lifting Capacity Tables

Table 5 Unit:Metric kg

Working radius (m)	Main boom(m)					
	Telescoping cylinder I outriggers intermediately extended, over sides and rear					
	10.6	14.3	19.8	25.3	30.8	36.3
3.0	25000	23000				
3.5	22000	22000				
4.0	20000	20000	14000			
4.5	18000	18000	14000			
5.0	15000	15000	14000	10200		
5.5	12500	12500	12500	10200		
6.0	10000	10200	10900	10000		
6.5	9000	8800	9200	9500	7500	
7.0	7800	7600	8000	8500	7200	
7.5	6500	6500	7000	7500	7000	
8.0	6000	4500	6100	6500	6800	5800
9.0		3500	4800	5200	5500	5500
10.0		2800	3800	4200	4500	4800
11.0			3000	3300	3700	4000
12.0			2300	2800	3100	3300
13.0			1800	2200	2600	2800
14.0			1400	1900	2100	2300
15.0			1100	1500	1800	2000
16.0			850	1200	1500	1700
18.0				750	1000	1100
20.0						800
22.0						
I	0	3.7	3.7	3.7	3.7	3.7
II	0	0	5.5	11.0	16.5	22.0
Reevings	8	6	4	4	3	3
Hook	25 t					

Table 6 Unit:Metric kg

Working radius (m)	Main boom(m)				
	Telescoping cylinder I completely retracted and outriggers intermediately extended, over sides and rear				
	10.6	16.1	21.6	27.1	32.6
3.0	25000	14000			
3.5	22000	14000			
4.0	20000	14000	10200		
4.5	18000	14000	10200		
5.0	15000	14000	10200		
5.5	12500	13000	10200	7500	
6.0	10000	11000	10000	7500	
6.5	9000	10000	10000	7200	
7.0	7800	8300	9000	7000	
7.5	6500	7400	7800	6800	5800
8.0	6000	6500	6800	6400	5500
9.0		5000	5500	5800	5000
10.0		4000	4500	4900	4300
11.0		3600	3800	4100	4100
12.0		3000	3000	3500	3700
13.0		2500	2500	3000	3100
14.0			2200	2500	2700
15.0			1900	2100	2300
16.0			1600	1800	2000
18.0			900	1000	1500
20.0				700	1100
22.0					
I	0	0	0	0	0
II	0	5.5	11.0	16.5	22.0
Reevings	8	6	4	3	3
Hook	25 t				

Table 7 Unit:Metric kg

Main boom angle (°)	Main boom(m)+jib(m)		
	outriggers completely extended		
	40.0+8.0		
	5°	17°	30°
over sides and rear			
80	3000	2200	1600
78	2900	2150	1600
76	2800	2100	1500
74	2650	2000	1450
72	2450	1850	1400
70	2250	1750	1350
68	2100	1600	1300
66	1900	1500	1250
64	1650	1400	1200
62	1450	1250	1050
60	1200	1100	950
58	1000	900	800
56	850	750	650
54	700	600	500
52	570	5200	470
50	430	410	400
1 reeving			
3t hook			